



SC181H Owner's Manual



Sod Cutter Owner's Manual

SC181H, SC181HG
Beginning Serial #: 110116001

Original Instructions

IMPORTANT- READ CAREFULLY BEFORE USE AND KEEP FOR FUTURE REFERENCE

Part No. 373506

1

373506_B_HI

Specifications

	SC181H	SC181HG
Engine: HP	5.5 HP (4.1 kw)	5.5 HP (4.1 kw)
Engine: Model	GXV160UH2N1AH	GXV160UH2N1AH
Engine: Type	Honda	Honda
Engine: Fuel Capacity	1.6 qt. (1.5 L)	1.6 qt. (1.5 L)
Engine: Oil Capacity	0.69 qt. (0.65 L)	0.69 qt. (0.65 L)
Total Unit Weight	395 lb. (179 Kg)	395 lb. (179 Kg)
Max. Operating Slope	20°	20°
Overall Length	60" (1524 mm)	60" (1524 mm)
Overall Width	26.5" (673 mm)	26.5" (673 mm)
Overall Height	38.5" (978 mm)	38.5" (978 mm)

Intended Use

This machine may only be utilized for the purpose for which it was designed, i.e. to cut 18in (45.7 cm) wide strips of turf. Make sure that all operators of this equipment are trained in general machine use and safety.

WARNING: During operation the lawn and turf are cut into strips. Should the cutter's wheels skid during use it is advisable to adjust the cutting depth. If this operation does not prevent this occurrence check the state of the terrain. If it is too dry it should be wetted so that the blade encounters a slight resistance, thus making cutting operations easier.

Safety



WARNING

This product can expose you to chemicals including gasoline engine exhaust, which is known to the State of California to cause cancer, and carbon monoxide, which is known to the State of California to cause birth de-fects or other reproductive harm. For more information go to www.P65Warnings.ca.gov.

Part No. 373506

3

373506_B_HI

Instruction Labels

The labels shown below were installed on your BILLY GOAT® Sod Cutter. If any labels are damaged or missing, replace them before operating this equipment. Item numbers from the Illustrated Parts List and part numbers are provided for convenience in ordering replacement labels. The correct position for each label may be determined by referring to the Figure and Item numbers shown.



Fig. 1
DANGER KEEP HANDS AND FEET AWAY P/N 440424

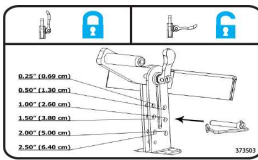


Fig. 2
HEIGHT ADJUST PIN 373503

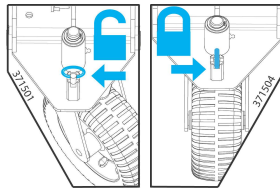


Fig. 3
LABELS CASTER LOCK P/N 371501 & 371504

**TORQUE GR. 8
BLADE BOLTS
TO 26-28 FT.-LBS.
(35-38 N-m)**

Fig. 4
BLADE ARM P/N 373501

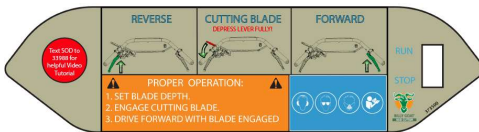


Fig. 5
CONSOLE P/N 373500

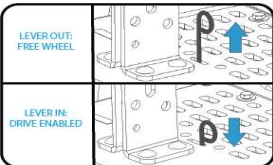


Fig. 6
DRIVE ENABLE P/N 373504

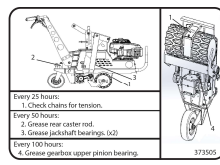


Fig. 7
SERVICE INSTRUCTIONS P/N 373505

Operator Controls

Drive Control: The ground drive controls are located on each handlebar of the machine. The right side lever control moves the machine forward at varying speeds depending on how far the operator engages the control. The left side lever control moves the machine in reverse at varying speeds depending on how far the operator engages the control. (While either control is engaged, the opposite control is "locked out")

(See Fig. 5)

Blade Height Lever: Located on the left hand side of the handle bar. It must be fully engaged when in use.

Blade Height Adjustment: Pre-select cutting depth by inserting depth control pin in the hole which corresponds to the depth desired. A chart is provided on a placard near the blade depth control handle. To set depth while using the machine loosen cam lever clamping the depth control handle in the "up" position. Rock the machine forward to allow the cutting blade to drop to the pre-selected depth. (The depth control handle should rest against the depth control pin). You are now ready to start cutting sod.

(See Fig. 2)

Free Wheel Lever: Located on top of machine next to the height adjust. Pull the lever out to free wheel and push it in to allow the drive to be engaged. (See Fig. 6)

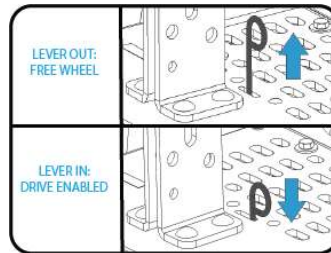


Fig. 6
DRIVE ENABLE P/N 373504

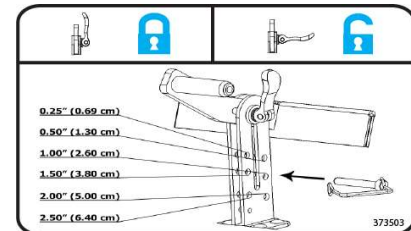


Fig. 2
HEIGHT ADJUST PIN 373503



Fig. 5
CONSOLE P/N 373500

Part No. 373506

4

373506_B_HI

Part No. 373506

6

373506_B_HI

Operation

Note: Item numbers in () will be referenced in the Parts Illustration and Parts List on pages 16-34.

Like all mechanical tools, reasonable care must be used when operating machine. Inspect machine work area and machine before operating. Make sure that all operators of this equipment are trained in general machine use and safety.

Starting the Engine

- Put oil in engine before starting!
- See engine manufacturer's instructions for type and amount of oil and gasoline used. Engine must be level when checking and filling oil and gasoline.

Engine Speed: Engine speed is fixed.

Fuel Valve: Move fuel valve to "ON" position.

Choke: Found on engine above fuel "ON" switch.

Pull: Pull the starting rope to start engine.

Forward/Reverse Controls: See page 6 "Operator's Controls".

WARNING: Do not operate if excessive vibration occurs. If excessive vibration occurs, shut engine off immediately and check for damaged or worn blade, loose blade bolts, loose engine or lodged foreign objects.

Handling and Transporting

- Use loading ramps to move unit into truck or trailer for transport.
- Do not** operate the blade when loading.
- Never** load this machine by hand.

Cutting Operation

The unit performs best when the ground is wet. If possible, sprinkle the work area several hours before starting.

CAUTION: Use extreme care when operating the blade. Inspect the work area for foreign objects that could cause damage to the unit or injure the operator if struck by the blade. Never operate the blade with bystanders in the work area.

General Operation

Position the turf cutter outdoors on sufficiently firm, flat soil. Read the instructions provided by the engine manufacturer in the relative manual and follow them carefully to prevent situations from arising which may endanger either persons or the machine.

TIP: When using the machine for the first time, execute maneuvers on flat ground free of foreign objects to become more comfortable with machine operation. After switching on the engine, follow the instructions given in the previous paragraph. **Be mindful of the machine tipping forward (See Figure 9, on the following page).**

WARNING: **Do not** adjust cutting depth while machine is in motion. Choose a cutting depth suitable for the type of terrain the machine is to be used on.

Operation Continued

1. Choose a depth of cut. See instruction label on the unit (see Fig. 2). Note: Sod should be cut leaving a minimum amount of dirt (1/4"-3/8") attached to the roots. This minimizes its weight for removal and encourages faster growth when reused.

2. Holding both handles, fully engage the blade clutch lever on the operator's left hand side. Rocking back on the handles, allow the blade to cut into the sod to your chosen depth. Keep the blade clutch lever fully engaged at all times when cutting (see Fig. 9).

3. As ground conditions allow, increase/decrease the ground speed by squeezing the drive lever more (increased speed) or less (slower speed). If the engine RPM drops significantly reduce forward speed until the engine comes back up to speed.

4. When you reach the end of the strip you are cutting, release both the clutch lever and the speed control until the unit stops. Using the blade depth adjustment handle raise the blade to the maximum height possible and lock it in place.

5. Fully engage both blade drive and forward ground drive levers and the unit will drive forward and complete the cut of the strip.

6. Release the blade lever and continue to drive the unit forward into position for the next cut, repeat the process above as required.

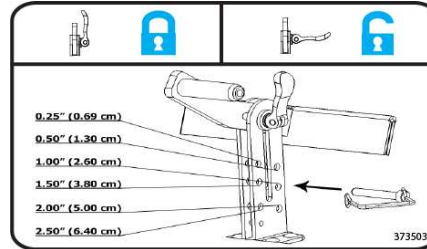


Fig. 2
HEIGHT ADJUST PIN 373503

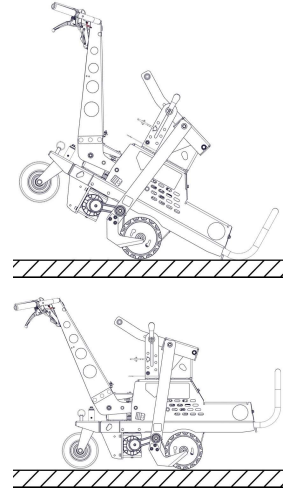


Fig. 9.

Troubleshooting

Problem	Possible Cause	Solution
Engine will not start.	<ul style="list-style-type: none"> Rocker Stop switch on operators console is in "stop" position. Choke not on. Out of gasoline, bad or old gas. Spark plug wire disconnected. Dirty air cleaner. Blade clutch is engaged 	<ul style="list-style-type: none"> Move Rocker Stop switch on operators console to "run" position. Check engine. Check Gasoline. Check for spark with an approved tester. Clean or replace air cleaner. Disengage the blade clutch lever.
Engine runs poorly	Spark plug wire loose. Carburetor out of adjustment. Water or dirt in fuel system. Spark plug fouled, faulty or wrong gap	Adjust carburetor (refer to engine manual). Reset gap or replace spark plug (refer to engine manual).
Belt slips	"Clutch cable out of adjustment. Belt worn. Trying to cut too deep for soil conditions."	"Adjust clutch cable. Replace belt. Replace blade or irrigate sodded area."
Abnormal vibration	"Loose cutting blade. Handlebar vibration mounts old or worn. Loose engine bolts"	"Stop work immediately. Check blade mounting bolts. Replace damaged or bent blade if required. Inspect handlebar vibration mounts. Check engine mounting."
Will not cut or has poor cutting performance	"Dull or damaged Blade. Debris locked against blade. Engine running at too low RPM. Sod is too dry."	"Sharpen or replace blade. Remove debris. Check engine RPM (refer to engine manual). Irrigate area where cutting sod."
Drive will not engage	"Transmission by-pass rod is in neutral. Drive cable out of adjustment. Broken drive cable. Worn or broken belt."	"Dis-engage transmission by-pass rod. Adjust drive cable. Replace with new cable. Replace belt."
Drive will not release	"RTN mechanism out of adjustment. Drive cable out of adjustment. Damaged drive lever."	"Adjust RTN mechanism. Adjust drive cable. Replace drive lever."
Engine is locked, will not pull over	"Oil in cylinder due to having engine tipped with head down too long. Damaged engine."	"Remove sparkplug and turn engine over to clear oil. Clean sparkplug and replace. Refer to engine owner's manual."